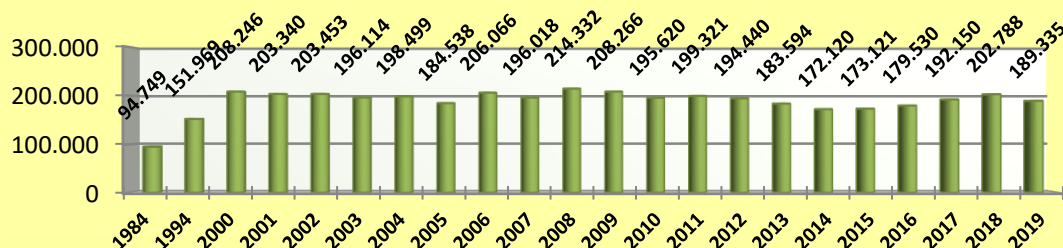


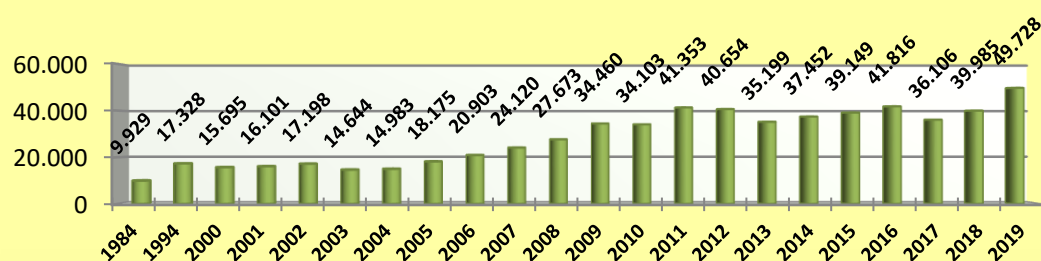
Causas ingresadas por fuero

Año	Civil	Laboral	Penal	Totales
1984	94.749	9.929	94.886	199.564
1994	151.969	17.328	139.761	309.058
2000	208.246	15.695	208.611	432.552
2001	203.340	16.101	223.152	442.593
2002	203.453	17.198	243.457	464.108
2003	196.114	14.644	241.066	451.824
2004	198.499	14.983	241.838	455.320
2005	184.538	18.175	244.760	447.473
2006	206.066	20.903	243.162	470.131
2007	196.018	24.120	231.861	451.999
2008	214.332	27.673	257.231	499.236
2009	208.266	34.460	250.117	492.843
2010	195.620	34.103	244.732	474.455
2011	199.321	41.353	243.867	484.541
2012	194.440	40.654	250.228	485.322
2013	183.594	35.199	256.463	475.256
2014	172.120	37.452	246.643	456.215
2015	173.121	39.149	241.877	454.147
2016	179.530	41.816	243.905	465.251
2017	192.150	36.106	267.388	495.644
2018	202.788	39.985	276.367	519.140
2019	189.335	49.728	288.048	527.111

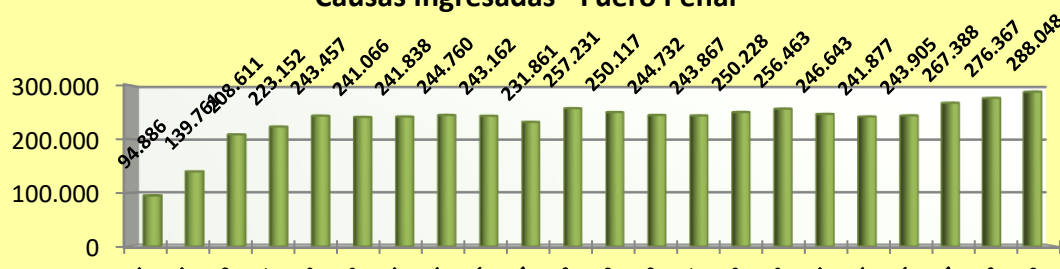
Causas ingresadas - Fuero Civil



Causas Ingresadas - Fuero Laboral



Causas Ingresadas - Fuero Penal



1988 1990 2000 2001 2002 2003 2004 2005 2006 2007 2008 2009 2010 2011 2012 2013 2014 2015 2016 2017 2018 2019